



ecoHITCH - Designed Specifically For Your Green Vehicle

Installation Instructions

1.25" EcoHitch Stealth

Application Fits

Tesla Roadster 1.5 (2008)

Tesla Roadster 2.0 & Roadster Sport 2.0 (2010)

Tesla Roadster 2.5 & Roadster Sport 2.5 (2011)

X7198

Gross Tongue Weight (TW) 200 LBS
TOWING NOT RECOMMENDED

Torklift Central
315 Central Ave N
Kent, WA 98032
253-854-1832
www.torkliftcentral.com
support@tlcentral.com

Stay Connected



torkliftcentral



torkliftcentral



tlcentral



torklift central



torklift central



Bolt Kit Weight: 685g +/-

Hardware Included

QTY	Fastener
8	5/16" Flat Washer
4	5/16" Lock Washer
16	3/8" Flat Washer
4	3/8" Fender Washer
8	3/8" Lock Washer
6	3/8"-16 Hex Nut
8	3/8" -16 x 1/1-4"
1	3/8" Bolt Fisher
6	SS M6-1.00 x 25mm
4	SS M8-1.25 x 40mm
2	Threaded Steel Plate
1	Drivers Side Aluminum Frame Strap
1	Passengers Side Aluminum Frame Strap

READ THESE INSTRUCTIONS THOROUGHLY AND ACCOUNT FOR ALL HARDWARE LISTED BEFORE BEGINNING INSTALLATION!

Step 1. Raise rear of vehicle off of ground and place on ramps or suitable jack stands.

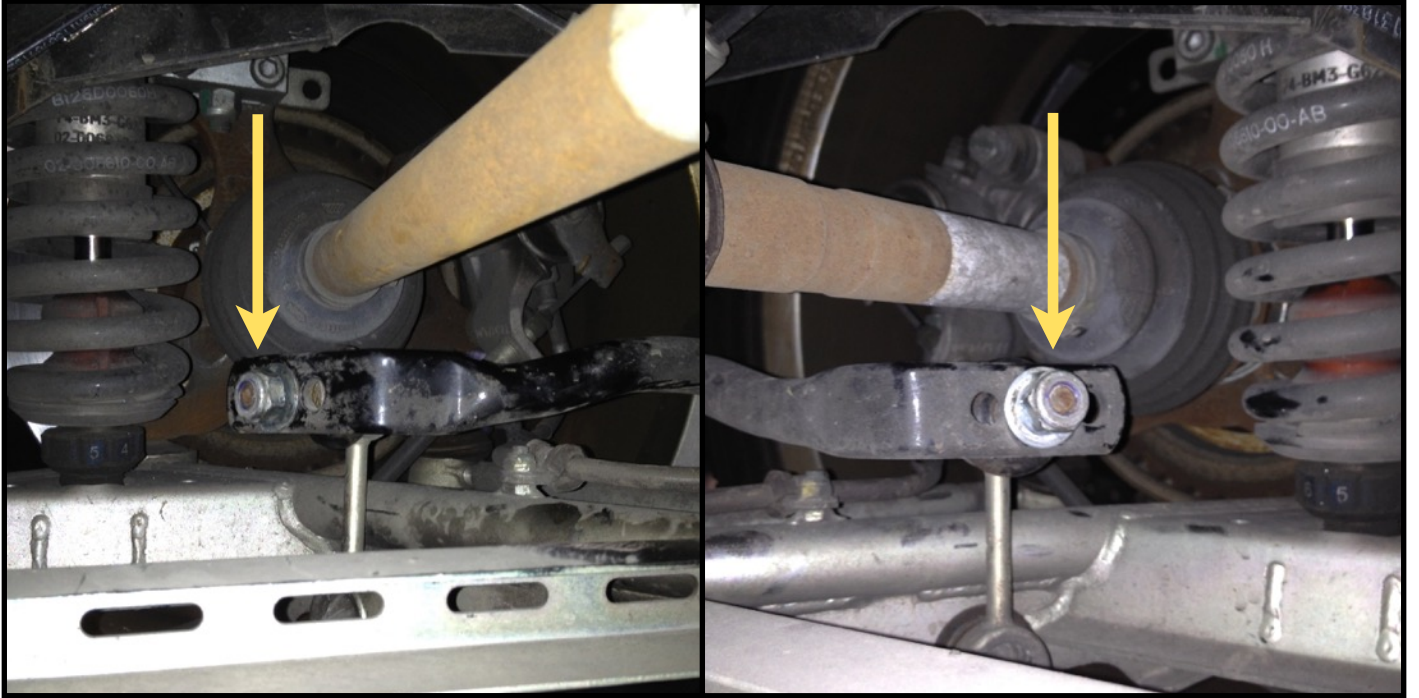
Step 2. Remove the first lower aerodynamic pan that is attached to the rear of the vehicle undercarriage as shown below.



Step 3. Remove the lower aerodynamic body panel nearest to the center of the vehicle. This panel is directly behind the panel you removed in Step 2. **NOTE:** This panel is one solid sheet of metal.



Step 4. Disconnect sway bar end links from sway bar on both sides of vehicle.



Step 5. Un-bolt sway bar u-clamps from frame of vehicle.



Step 6. Take one supplied 3/8"x1-1/4" bolt, one 3/8" lock washer, and two 3/8"-1/2" fender washers. Assemble them on the bolt as shown in the picture below. Take the 3/8" bolt fisher and attach it to the 3/8" bolt and assembly listed above.

Step 7. Starting on the drivers side. Take the bolt fisher wire (opposite end of the bolt assembly) and feed it through the frame and out the first hole opening in the frame tubing. See Figure [1].

NOTE: The entire assembly will not pass through the frame as one unit . It will be necessary to pass the washers through on the fish wire individually.

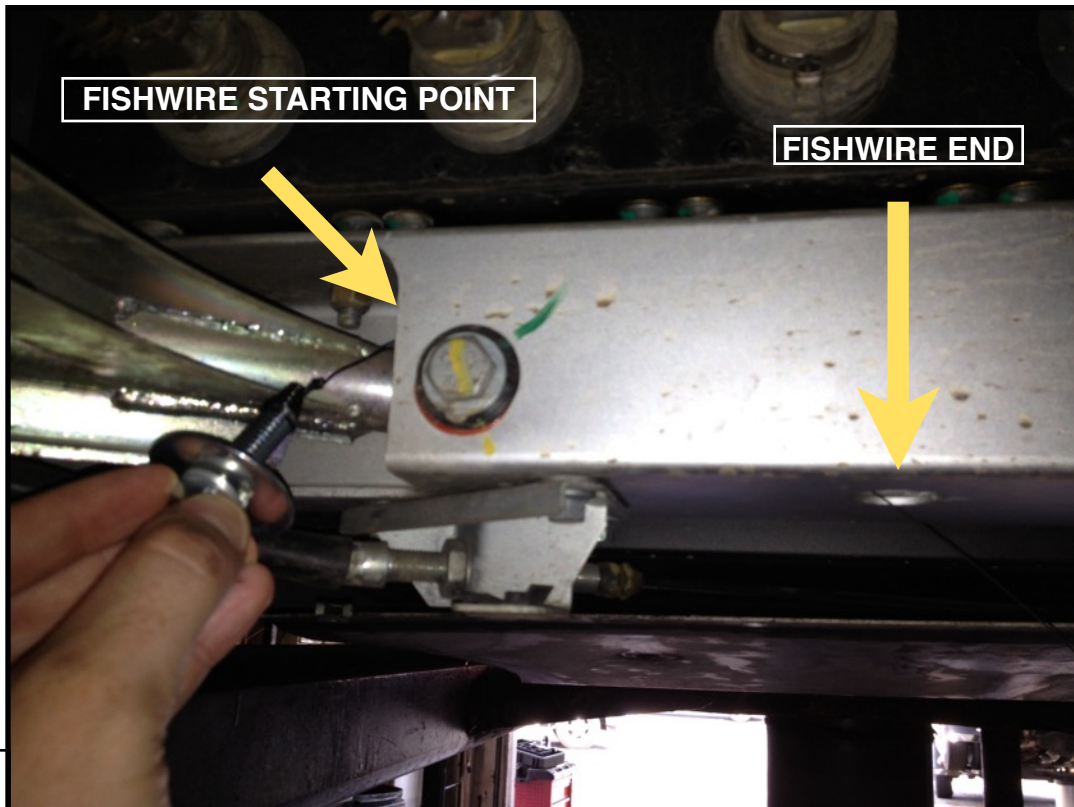


Fig. [1]



Step 8. Repeat Step 7 on passenger side.

Step 9. Using a paint pen or marking utensil, draw a cutting line on the metal coated plastic grille below the license plate. Measurements are listed below.

Roadster 1.5: measure 6" as shown in Figure [2].

Roadster 2.0/ Sport: measure 9.5" From each side of this panel as shown in Figure [3].

Roadster 2.5/ Sport: measure 9.5" From each side of this panel as shown in Figure [3].

Once you have drawn your template you will have roughly a 2.5"x 2.5" square. Since the material to be trimmed is flexible you may try cutting less to achieve a tighter fit. With the measurements provided you will be very close to the size of the receiver head.

NOTE: It is not necessary to trim into the lower carbon fiber/plastic panel.

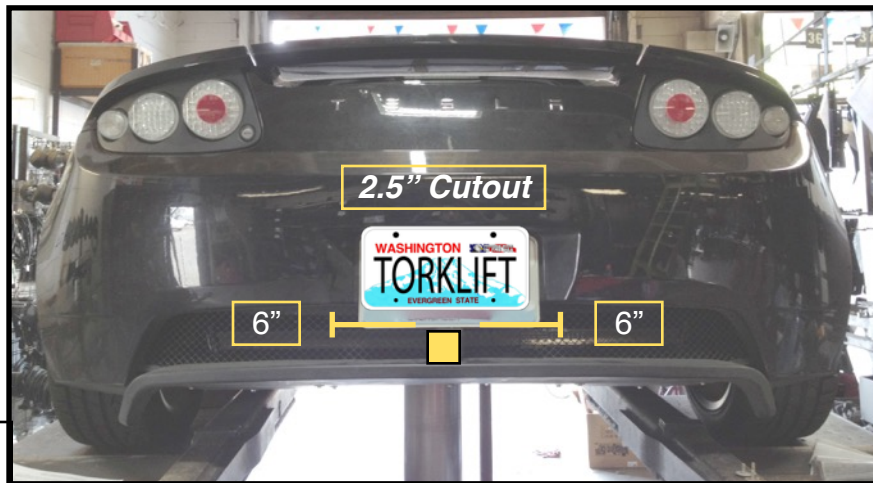


Fig. [2]

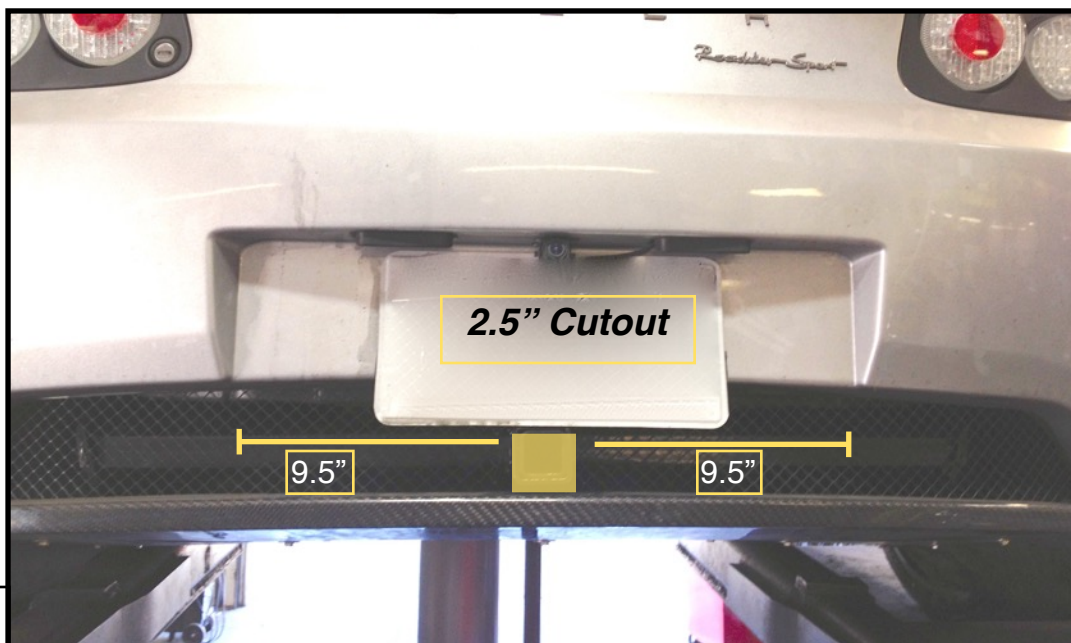
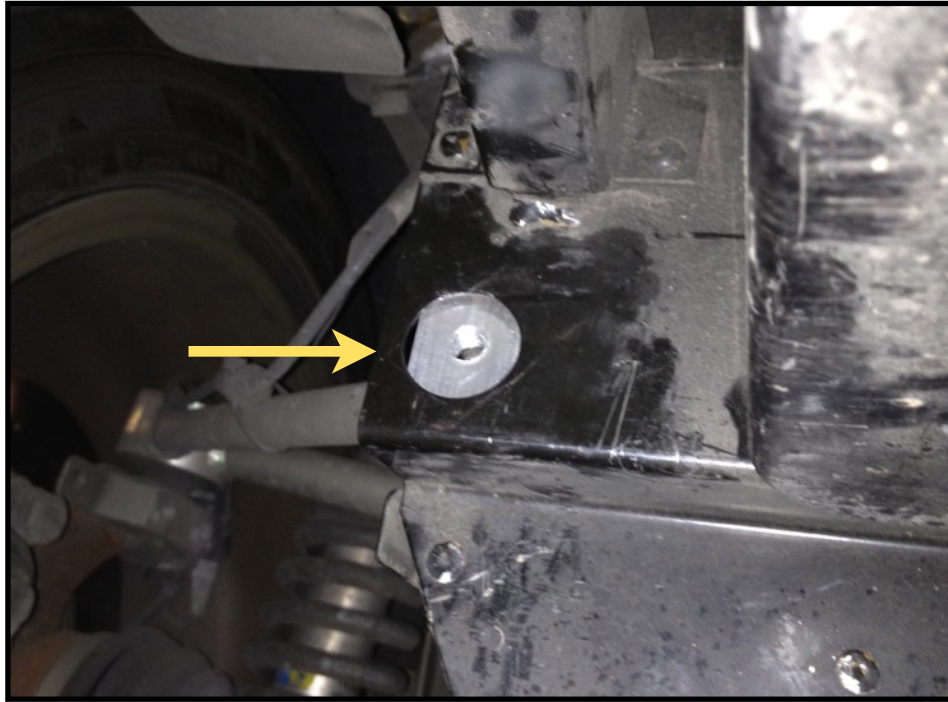


Fig. [3]

Step 10. Starting with the drivers side, take the threaded steel plate and place it into the hole directly above the sway bar mounting location. Ensure that the threads are somewhat centered. This will ease the installation of the trailer hitch cross tube.
Repeat on passenger side.



Step 11. Carefully take the trailer hitch and place into position on the frame and through the bumper housing.

NOTE! You may want help with this step. If help is not available, place a block of wood under the trailer hitch to hold it in position.



Step 12. To help hold the trailer hitch in position, take one of the M8X40mm bolts along with one 5/16" flat washer and loosely thread into the sway bar mounting hole. **DO NOT TIGHTEN.** This will relieve the majority of the weight of the hitch for installation. Repeat on passenger side. You will remove these bolts at a later step to re-use for installation.



Step 13. Starting with the drivers side, take one 3/8"x1-1/4" bolt, one 3/8" lock washer, and one 3/8" flat washer and loosely thread this combination through the trailer hitch and then into the threaded steel plate that you placed into the frame in Step 10.

DO NOT TIGHTEN. Repeat on passenger side.

Step 14. Remove the M8x40mm sway bar bolts used in Step 12 to hold the hitch into position.

Step 15. Starting with the drivers side, take the sway bar that was disconnected in Step 5 and place it back into position behind the trailer hitch plate. Repeat on passengers side. See Figure [4].



Fig. [4]

Step 16. Take one M8x40mm bolt, one 5/16" lock washer, two 5/16" flat washers and loosely thread the assembly into the sway bar mounting brackets. **DO NOT TIGHTEN.** Repeat for passenger side. **Do not connect sway bar end links at this point.**

Step 17. Starting with the drivers side, take the driver side aluminum frame strap and place it into position on the stud that you fished through the frame in Step 7. After placing the strap onto the stud, take two 3/8" flat washer, then one 3/8" lock washer, and one 3/8" hex nut and hand tighten.

NOTE: These two frame straps are drivers and passenger side specific. See Figure [5] for strap reference. Bolt may spin in frame. You may need to use a high speed impact gun to snug it down and to keep the bolt assembly from spinning to achieve the final and proper torque for the final tightening sequence. Repeat on passengers side.



Fig. [5]

Passenger side strap shown above. Notice tab in the middle of the strap faces inward toward center of vehicle and bends upwards. Frame strap has pre-cut holes into it that will allow the lower aerodynamic pan be re-installed with longer replacement bolts at a later step.

Step 19. Align the set of two holes on the hitch and aluminum straps with the aluminum straps placed underneath the hitch. Once the holes are properly aligned, take one 3/8"x1-1/4" bolt, two 3/8" flat washer, and place it up through the strap and through the trailer hitch. These bolts must be placed with the threads of the bolt facing upward into the hitch. Secure bolt with one 3/8" flat washer, one 3/8" lock washer, and one 3/8" hex nut and hand tighten. Repeat on remaining bolt then repeat on passenger side.

See Figure [6].

NOTE: If bolts are placed downwards the lower aerodynamic pan will not fit back into position!

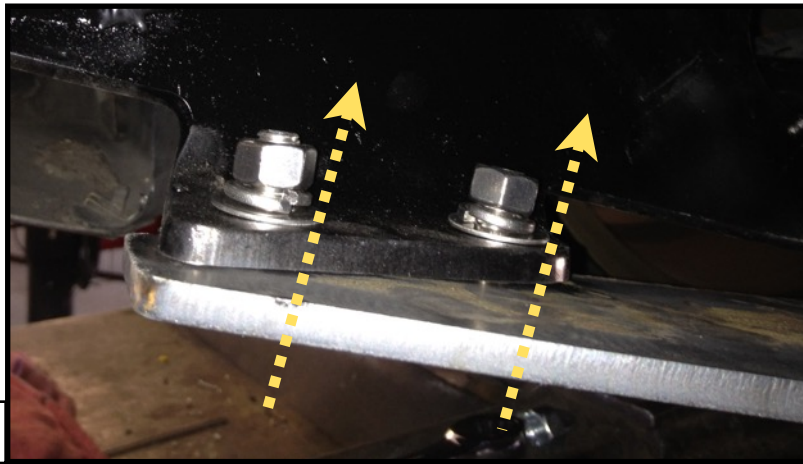


Fig. [6]

Step 20. Torque listed hardware to following specifications:

Step 17 Frame Strap Hardware: 20ft lbs.

Threaded Steel Plate Hardware: 20ft lbs.

Sway Bar Mounting Hardware: 12ft lbs.

Step 21. Replace the lower aerodynamic panel removed in Step 3. Note the locations below with arrows. These arrows indicate bolts that you will be replacing with the supplied M6x25mm bolts. Torque hardware to 10ft lbs.



Step 22. Once the lower aerodynamic panel has been re-installed, torque remaining frame strap hardware that attaches to the trailer hitch in Step 19 to 20ft lbs.

Step 23. Re-install the aerodynamic panels removed in Step 2 using the supplied M6x25mm bolts. Torque these bolts to 10ft lbs.



Congratulations on the completed installation of the Tesla Roadster Stealth EcoHitch! It is designed with a lifetime warranty for a lifetime of enjoyment. If you have any questions or suggestions please do not hesitate to contact our tech support at support@tlcentral.com or by phone at (253)-854-1832.



WARRANTY/DISCLAIMER INFORMATION

Torklift Central requires proof of purchase for warranty claim registration, with pictures of any defective product before issuing a replacement. Torklift will not accept claims on any product without proof of purchase, which can be faxed, scanned, emailed or mailed to the information provided below. Torklift Central warrants its hitches, custom hitch receivers and accessories (excluding electrical wire harnesses which carry a warranty from their specified manufacturer) from date of purchase against defects in material and workmanship under normal use and service for the ownership life of the original consumer purchaser. Torklift Central will replace free of charge any part that proves defective in material or workmanship when presented to Torklift Central, transportation charges prepaid by purchaser, at the address above. **This warranty is limited to defective parts replacement only. Labor charges and/or damage incurred in installation or replacement, as well as incidental and consequential damages connected therewith are excluded.** This warranty does not include normal wear and tear or the finish and paint. Rusting, cracking or peeling of the finish is also excluded. Some states do not allow the exclusion or limitation of incidental or consequential damages, so the above limitation or exclusion may not apply to you. Any damage to Torklift Central products as a result of misuse, abuse, neglect, accident, improper installation or any use violative of instructions furnished by Torklift Central will void the warranty. This warranty gives you specific legal rights and you may also have rights, which vary from state to state. With warranty service, you may be able to go to a small claims court, a state court or a federal district court.

Although Torklift Central trailer hitches are both tested and rated for towing within the specific capacity label found on each trailer hitch. Torklift Central assumes no liability for vehicle manufacturers warranty due to the use of a Torklift Central trailer hitch being used for towing behind any vehicle or using the trailer hitch in a manner that it was not designed for. Although this specific trailer hitch has a load rating, which includes trailer tongue weight, and a trailer weight carrying capacity, Torklift Central is not responsible for the voiding of any warranty on any vehicle due to factory towing limitations. All vehicle warranties are the sole property and responsibility of the owner of the vehicle that the Torklift Central trailer hitch is installed upon. Torklift Central does not endorse towing behind any vehicle if the vehicles manufacturer states that towing is not recommended. Check your vehicle's owner's manual for the proper tow rating of your vehicle.

WARNING Your vehicle may have a lower tow rating than this trailer hitch. If your vehicle's tow rating is less than the rated towing capacity on your Torklift Central trailer hitch, your trailer hitch capacity is limited to your vehicle's factory rated towing capacity.

FOR EXAMPLE: the label on your Torklift Central trailer hitch states it's capacity is rated for 500 pounds tongue weight and 5,000 pounds towing weight. However your vehicle's factory rated towing capacity is limited to only 350 pounds tongue weight and 3,500 pounds towing weight. In this example your maximum towing capacity of your Torklift Central trailer hitch is limited to 350 pounds tongue weight and 3,500 pounds towing weight as stated by your vehicle's maximum factory tow rating.

DANGER Never exceed your vehicle's manufacturer's recommended towing capacity which may be a lower rating than this trailer hitch

Unsure of your tow rating? Download our towing app from the app store to find your vehicles tow rating.
www.torkliftcentral.com/app.php